

Site Information:

Project: NRG-sample data
Location: Hinesburg VT
Elevation: 350

Sensor on channel 1:

NRG #40 Anemometer
Height: ft
Serial #: SN:

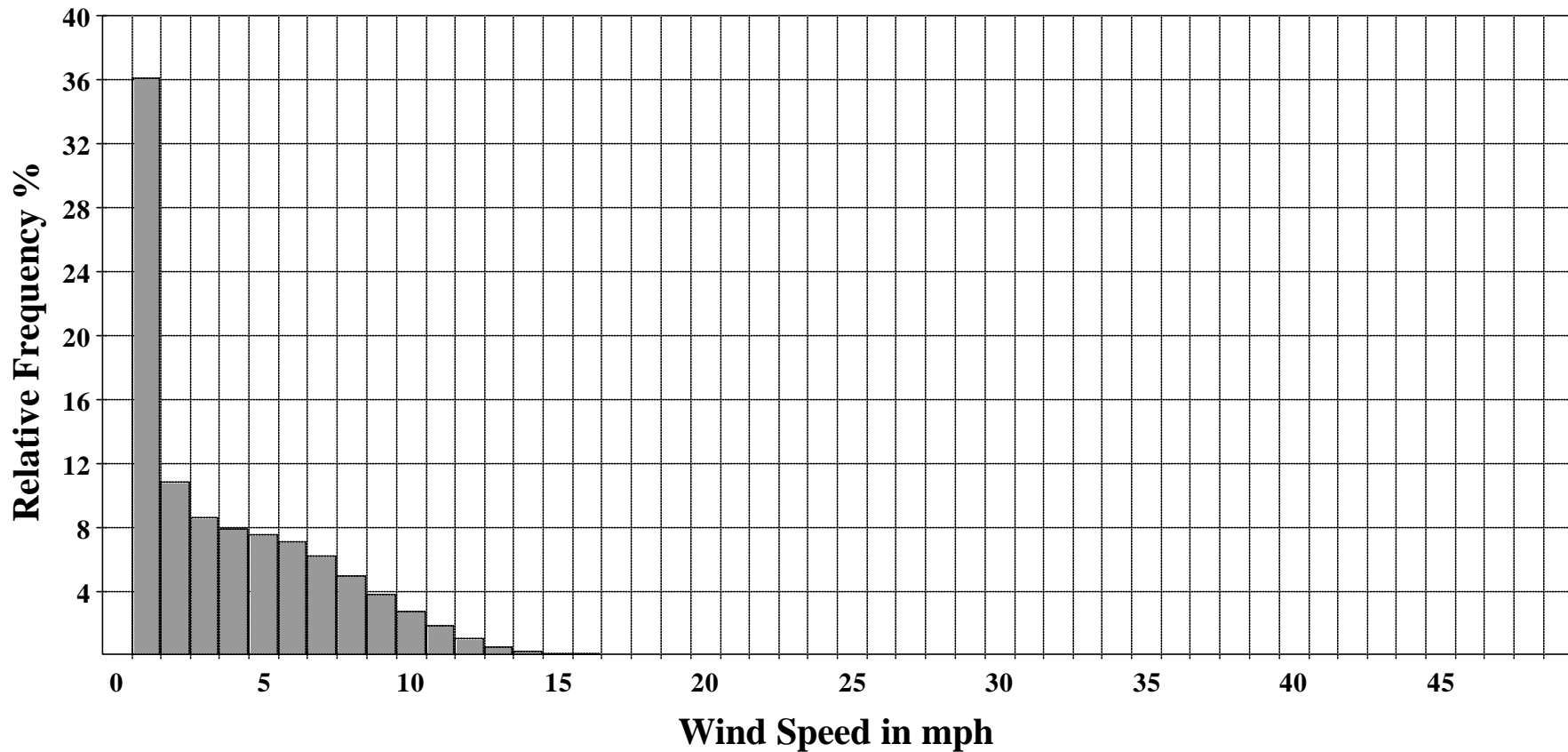
06/17/2002 to 06/02/2004

Frequency Distribution Ch 1

SITE 0125

NRG Systems Data Site

Frequency Distribution



Site Information:

Project: NRG-sample data

Location: Hinesburg VT

Elevation: 350

Sensor Information:

1 NRG #40 Anemometer	7 #200P Wind Vane
2 NRG #40 Anemometer	8 #200P Wind Vane
3 NRG #40 Anemometer	9 #110S Temp Sens (F)
4 NRG #40 Anemometer	10 BP-20 Barometer
5 NRG #40 Anemometer	11 RH-5 Relative Humid.
6 Novalynx Rainguage	12 Voltmeter SCM

08/17/2002 to 12/02/2003**Summary Report**

SITE 0125

NRG Systems Data Site

Channel	1	2	3	4	5	6	7	8	9	10	11	12
Height	ft	ft	ft	10 m	ft	ft	10 m	10 m	ft	ft	5 ft	0
Units	mph	mph	mph	m/s	mph	in	deg	deg	F	inHg	%RH	Volts
Intervals with Valid Data	67498	67498	67498	67498	67498	67498	67498	67498	67498	67498	67498	67498
Average Filtered Data	3.74	3.9	3.74	1.75	3.74	0	74.48	74.33	45.51	30.03	57.7	95.95
Average for All Data	3.74	3.9	3.74	1.75	3.74	0	74.48	74.33	45.51	30.03	57.7	95.95
Min Interval Average	0.8	0.8	0.8	0.4	0.8	0			-123	19.2	0	0
Date of Min Interval	08/17/2002	08/17/2002	08/17/2002	08/17/2002	08/17/2002	08/17/2002			10/04/2002	10/04/2002	08/20/2002	08/17/2002
Time of Min Interval	12:10:00 AM	12:00:00 AM	12:10:00 AM	12:00:00 AM	12:10:00 AM	12:00:00 AM			7:30:00 AM	8:50:00 AM	9:50:00 AM	12:00:00 AM
Max Interval Average	19.4	20.4	19.4	9.1	19.4	1.14			99.6	31	99.2	880.6
Date of Max Interval	03/02/2003	03/02/2003	03/02/2003	03/02/2003	03/02/2003	10/01/2003			09/09/2002	02/16/2003	08/17/2002	08/02/2003
Time of Max Interval	11:50:00 PM	11:50:00 PM	11:50:00 PM	11:50:00 PM	11:50:00 PM	10:30:00 AM			4:00:00 PM	7:30:00 AM	12:00:00 AM	11:10:00 AM
Average Interval SD	1.36	1.38	1.36	0.62	1.36	0	19.89	19.9	0.08	0	0.43	10.76
Min Sample	0.8	0.8	0.8	0.4	0.8	0			-123.3	19.2	0	0
Date of Min Sample	08/17/2002	08/17/2002	08/17/2002	08/17/2002	08/17/2002	08/17/2002			10/04/2002	08/28/2002	08/20/2002	08/17/2002
Time of Min Sample	12:00:00 PM	12:00:00 PM	12:00:00 PM	12:00:00 PM	12:00:00 PM	12:00:00 PM			8:50:00 AM	12:50:00 PM	9:40:00 AM	12:00:00 AM
Max Sample	39.3	40.1	39.3	17.9	39.3	0.31			100.1	31	99.3	1073.8
Date of Max Sample	11/10/2002	11/10/2002	11/10/2002	11/10/2002	11/10/2002	08/22/2002			09/09/2002	02/16/2003	08/17/2002	05/22/2003
Time of Max Sample	11:00:00 AM	11:00:00 AM	11:00:00 AM	11:00:00 AM	11:00:00 AM	11:00:00 AM			4:00:00 PM	12:50:00 PM	12:00:00 AM	12:10:00 PM
Average Interval TI	0.36	0.36	0.36	0.35	0.36							
Wind Speed Direction							N	N				

Power Density (W/sqm) 10.81 11.69 10.81 11.71 10.81

Wind Power Average Speed 4.7 4.83 4.7 2.16 4.7

Site Information:

Project: NRG-sample data
 Location: Hinesburg VT
 Elevation: 350

Sensor on channel 1:

NRG #40 Anemometer
 Height: ft Units: mph
 Serial #: SN:

May 2004**Hourly Averages Table Ch 1**

SITE 0125

NRG Systems Data Site

Day	Hour																							AVG	
	0	1	2	3	4	5	6	7	8	9	10	11	12	13	14	15	16	17	18	19	20	21	22		23
1	2.7	2.5	4.0	6.2	6.8	9.4	9.3	6.9	8.7	9.7	9.8	11.5	10.8	11.5	11.6	10.7	9.6	5.9	3.6	4.8	5.2	3.0	3.5	2.0	7.1
2	1.2	2.2	2.1	1.3	2.9	3.0	5.2	8.0	7.2	12.6	13.4	13.0	13.0	13.1	11.0	10.4	13.5	12.2	8.4	9.3	9.3	6.7	5.4	7.0	8.0
3	5.0	3.5	5.1	3.7	6.6	4.7	4.5	4.7	5.4	5.1	3.0	4.5	4.8	3.9	3.7	5.1	5.6	7.7	7.7	6.6	6.9	5.4	3.1	3.9	5.0
4	3.4	4.4	7.8	4.8	2.7	3.7	6.8	9.1	9.7	10.1	10.1	9.6	9.7	9.4	9.6	7.7	6.3	5.7	2.0	1.5	2.1	1.2	2.1	4.2	6.0
5	3.8	2.9	2.5	2.0	2.2	4.8	5.9	7.7	8.7	8.3	7.2	7.7	5.5	5.2	4.1	3.8	3.2	2.1	1.6	0.8	0.8	0.8	0.8	1.0	3.9
6	0.8	0.8	1.1	0.8	0.8	0.8	0.8	2.4	5.5	7.2	8.7	10.0	10.4	10.0	11.3	10.9	8.1	4.4	4.1	6.7	7.9	7.2	7.5	5.1	5.6
7	6.0	4.8	4.3	1.9	1.8	1.4	3.5	7.6	11.1	11.0	10.7	10.1	10.1	10.9	12.8	13.8	12.7	11.4	9.2	6.4	4.6	3.5	3.1	2.8	7.3
8	0.8	0.8	0.8	0.8	0.8	0.8	0.8	3.2	6.2	6.2	5.1	6.4	6.3	4.1	2.7	4.3	4.0	4.4	3.9	3.7	3.7	1.6	1.3	2.5	3.1
9	1.2	0.9	2.5	3.6	3.9	3.4	3.4	3.9	5.1	5.7	6.3	4.2	2.7	3.3	3.3	2.4	3.0	2.0	0.9	1.0	0.9	0.8	0.9	0.8	2.7
10	0.9	1.1	1.1	1.0	0.9	2.0	2.8	4.8	5.5	4.4	5.3	6.4	3.1	1.3	2.3	4.0	5.0	7.0	5.4	1.7	1.6	2.9	4.1	4.1	3.3
11	3.0	2.5	4.5	1.5	2.3	1.0	2.0	1.2	1.8	3.8	6.8	7.1	8.2	8.3	6.6	6.9	7.0	6.1	4.2	0.9	0.8	1.1	0.9	1.0	3.7
12	0.8	0.9	0.9	1.0	0.9	0.8	0.9	1.3	2.8	2.4	3.8	3.6	5.1	3.3	1.8	2.2	4.5	4.2	1.9	0.9	0.8	0.8	0.8	0.8	2.0
13	0.8	0.8	0.8	0.8	0.8	0.8	0.8	1.0	1.3	2.7	2.9	4.6	4.0	5.6	5.0	5.1	3.6	2.7	3.1	3.2	3.7	1.6	3.2	2.9	2.6
14	2.3	4.2	3.1	2.6	5.4	5.8	6.5	7.5	7.2	7.6	8.6	8.1	8.5	10.3	10.4	9.6	9.4	7.3	7.1	7.3	5.1	5.5	6.2	6.5	6.7
15	6.2	7.0	8.1	5.5	5.4	6.7	7.7	6.4	7.4	9.1	7.2	6.2	7.8	2.5	6.2	4.8	5.4	7.5	3.9	4.5	4.1	4.0	5.4	4.8	6.0
16	3.0	2.4	3.4	2.7	2.6	4.0	4.5	5.2	6.8	6.0	5.4	4.8	5.2	3.8	7.5	6.1	5.2	4.4	2.3	0.9	1.0	0.8	0.8	0.8	3.7
17	0.8	0.8	0.9	0.8	0.8	0.8	0.8	1.8	1.5	2.4	3.2	4.1	5.3	6.8	7.6	8.8	7.6	6.0	1.9	1.3	1.5	1.2	3.0	6.8	3.2
18	7.2	7.9	7.3	6.6	6.1	7.9	7.6	9.9	9.6	9.2	9.2	7.2	10.7	9.9	9.5	6.5	1.6	1.0	1.1	1.4	1.2	4.4	7.3	8.1	6.6
19	8.6	6.9	2.9	3.0	3.7	2.0	4.2	4.5	4.7	5.6	5.4	5.7	5.7	4.7	5.5	6.3	5.5	5.4	3.0	1.5	0.8	1.1	0.8	0.9	4.1
20	0.9	1.2	0.8	1.0	0.9	1.5	3.0	2.6	7.1	9.3	12.0	12.1	12.0	11.8	12.3	11.2	10.3	9.2	9.4	9.9	10.8	6.4	3.0	2.2	6.7
21	3.7	3.3	3.0	2.1	1.1	0.9	0.8	3.5	5.7	7.3	7.6	9.1	6.6	6.4	6.3	5.6	4.8	3.9	1.3	0.8	0.9	1.4	1.3	0.9	3.7
22	0.9	0.8	0.9	0.8	0.8	0.8	1.1	0.9	1.5	0.9	0.8	1.8	0.9	1.2	1.7	2.2	2.1	3.1	2.3	1.1	2.1	1.1	0.9	1.4	1.3
23	1.2	1.1	0.8	0.8	0.8	0.8	1.5	2.0	1.5	2.1	3.4	3.9	3.3	4.1	1.9	0.9	1.0	0.8	0.8	0.9	0.9	1.1	0.9	3.0	1.7
24	2.3	2.3	1.8	0.9	0.9	1.2	1.0	1.4	3.3	1.8	8.3	4.9	3.1	8.8	6.3	7.0	5.1	4.2	4.3	2.9	1.7	1.6	1.1	2.7	3.3
25	3.6	3.8	5.9	5.1	5.7	4.3	3.0	4.4	3.3	1.9	3.0	2.9	2.7	4.3	5.2	4.9	4.8	2.7	1.2	0.9	0.8	1.8	5.4	4.5	3.6
26	5.0	2.5	0.9	1.0	0.9	4.2	7.1	6.8	9.2	7.3	7.6	7.5	9.2	6.4	9.0	6.6	4.8	1.8	1.0	1.2	1.2	1.1	1.4	1.0	4.4
27	0.9	0.9	0.8	1.0	0.8	0.8	0.9	2.1	2.5	2.4	2.6	2.2	3.0	2.4	3.2	4.8	4.5	3.9	2.1	1.2	1.2	1.9	1.8	1.2	2.0
28	0.9	1.4	3.9	3.5	6.3	4.9	5.7	6.4	6.7	8.1	9.4	5.4	9.8	12.1	10.6	11.1	7.3	7.9	6.4	5.8	7.9	4.8	1.4	3.5	6.3
29	8.7	5.1	4.2	2.8	2.8	3.9	8.5	9.9	10.0	10.2	8.9	8.9	7.8	9.4	9.2	9.9	7.5	7.1	3.1	1.2	1.1	1.6	0.9	1.3	6.0
30	0.8	0.8	0.8	0.8	0.8	0.8	0.9	4.8	9.4	9.3	8.6	9.5	9.2	8.9	8.1	8.3	8.0	7.3	5.9	3.3	0.8	0.8	0.9	1.2	4.6
31	1.4	1.0	1.1	0.8	0.8	1.0	1.0	1.1	1.5	2.3	2.8	3.4	3.9	3.5	2.9	2.3	4.1	2.4	1.7	1.6	1.6	2.1	6.8	5.4	2.4
AVG	2.9	2.6	2.8	2.3	2.6	2.9	3.6	4.6	5.7	6.2	6.7	6.7	6.7	6.7	6.7	6.6	6.0	5.2	3.7	3.1	3.0	2.6	2.8	3.0	4.4

Site Information:

Project: NRG-sample data
Location: Hinesburg VT
Elevation: 350

Sensor on channel 9:

#110S Temp Sens (F)
Height: ft
Serial #: SN:

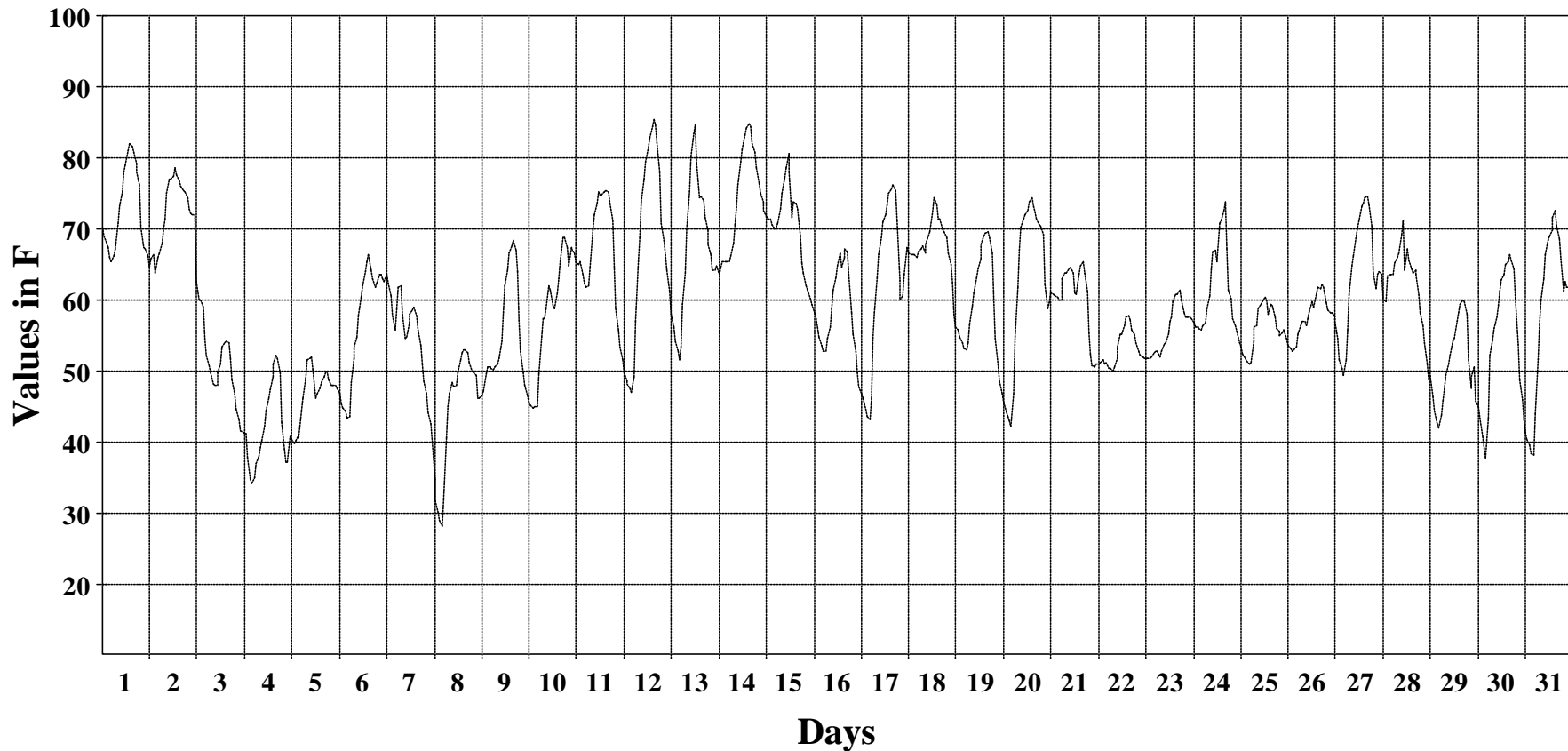
May 2004

Hourly Averages Graph Ch 9

SITE 0125

NRG Systems Data Site

Average Hourly Values



Average Value: 59.5

Site Information:

Project: NRG-sample data
Location: Hinesburg VT
Elevation: 350

Sensor on channel 10:

BP-20 Barometer
Height: ft
Serial #: SN:

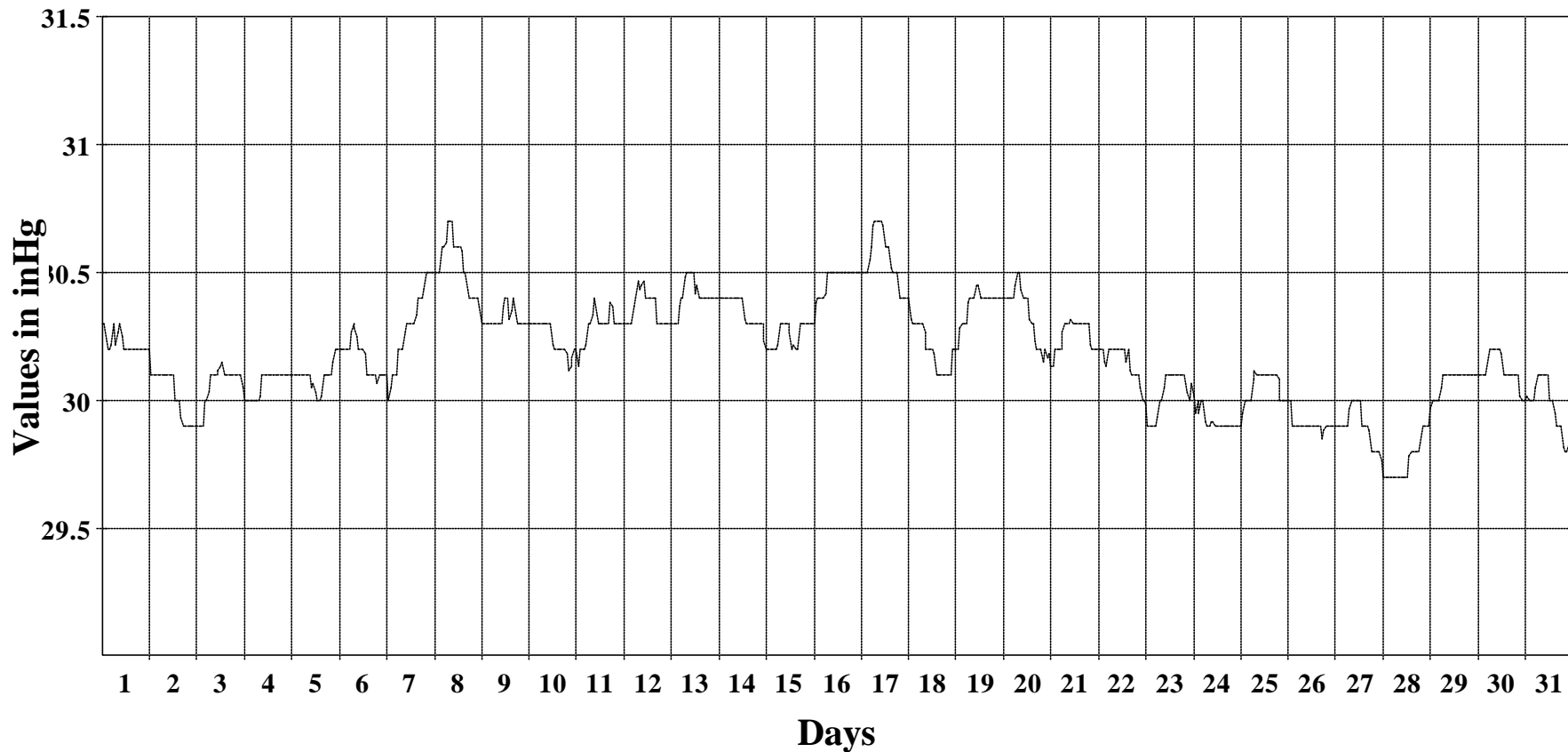
May 2004

Hourly Averages Graph Ch 10

SITE 0125

NRG Systems Data Site

Average Hourly Values



Average Value: 30.2

Site Information:

Project: NRG-sample data
Location: Hinesburg VT
Elevation: 350

Sensor on channel 1:

NRG #40 Anemometer
Height: ft
Serial #: SN:

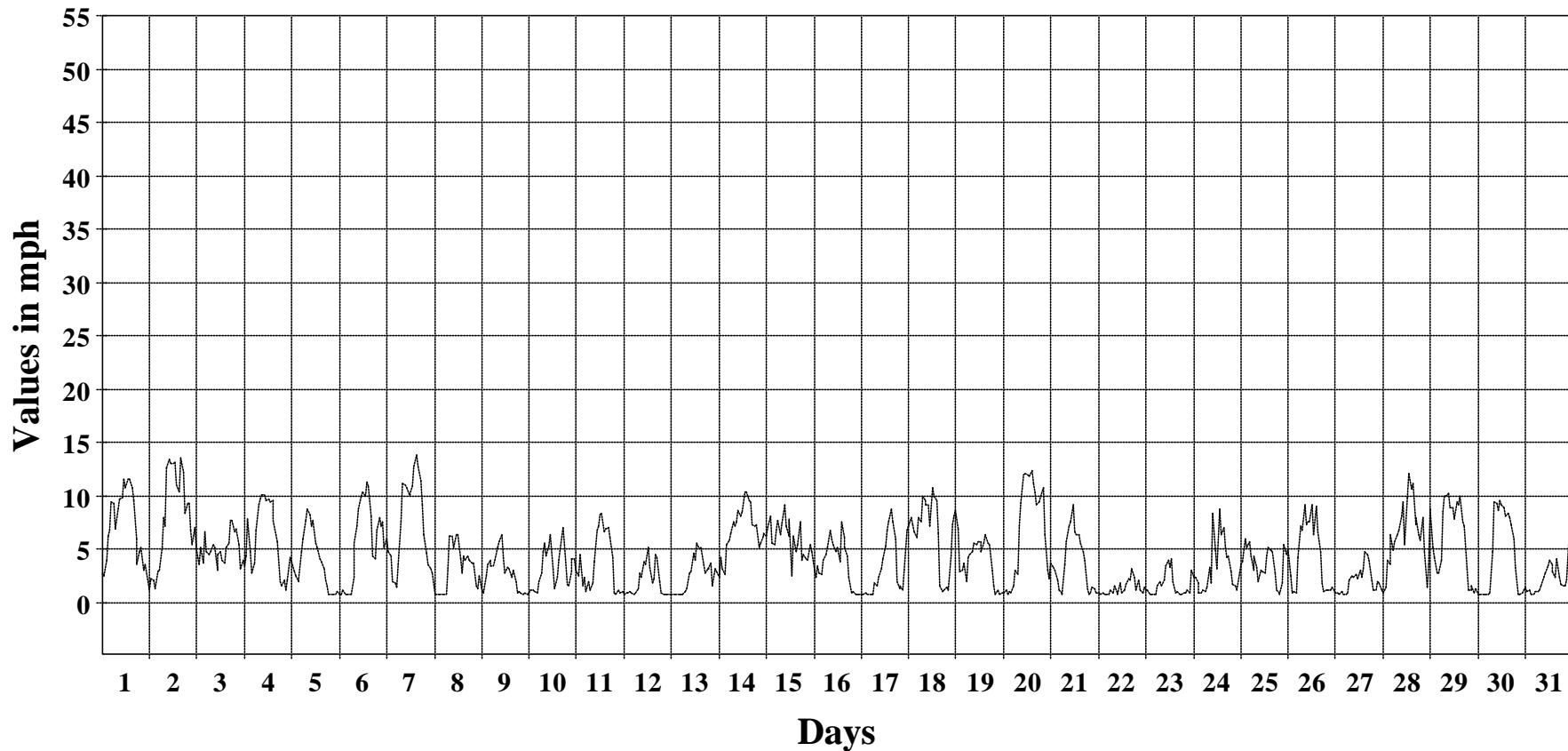
May 2004

Hourly Averages Graph Ch 1

SITE 0125

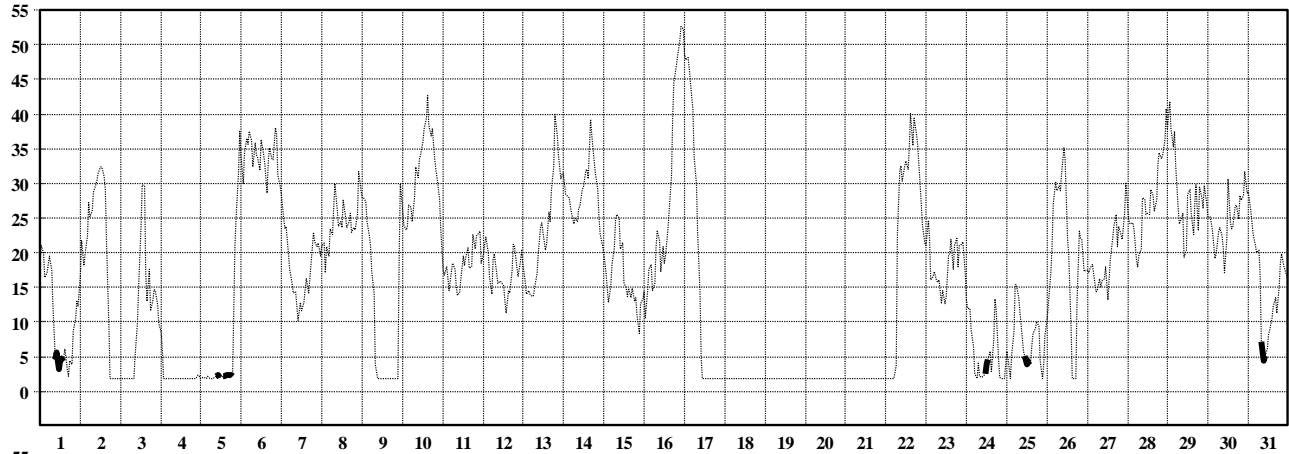
NRG Systems Data Site

Average Hourly Values

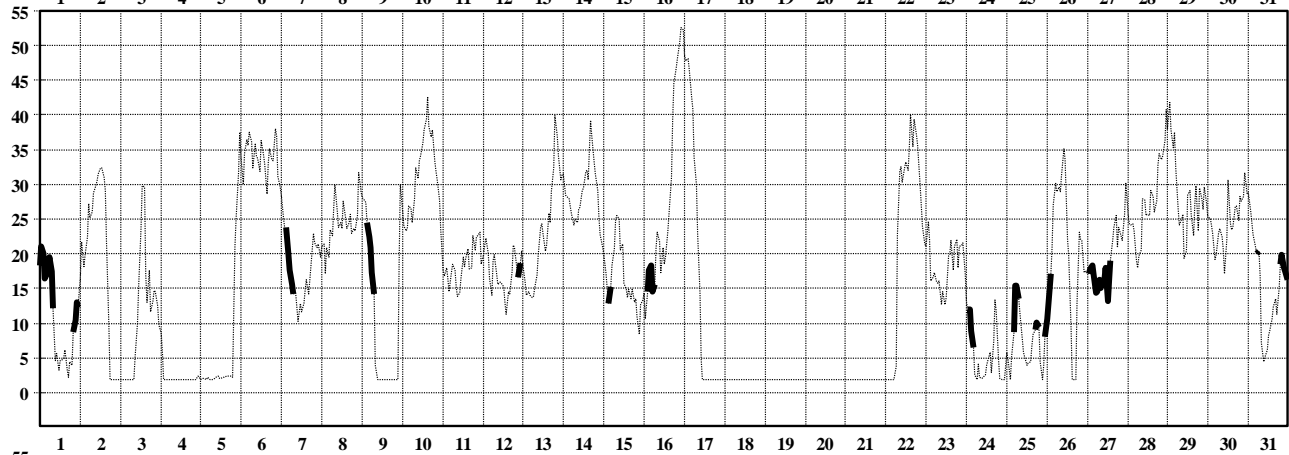


Average Value: 4.4

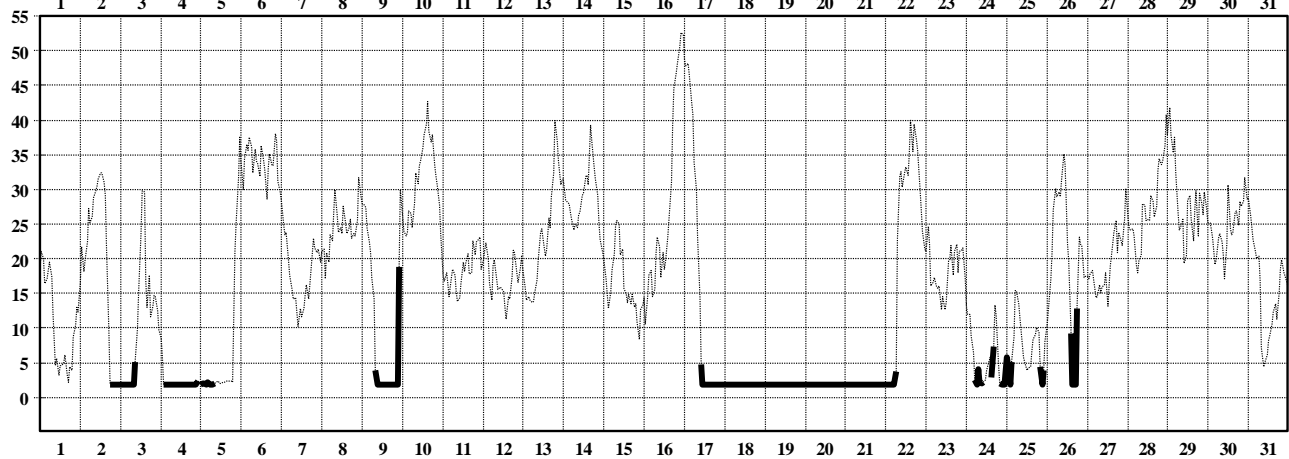
Ice Data



Bad Sensor



Invalid Data



March 2007

Data Quality Report Ch 1

SITE 0080

AWEA 2007

Site Information:

Project: New Project

Location:

Elevation: 3260

Sensor on channel 1:

NRG IceFreeII mph

Height: 75 ft

Serial #: SN:


Percent data by type:


Good Data 57.66%

Ice Data 4.44%

Bad Sensor 10.48%

Invalid Data 27.42%

 Data is of this type

 Data is of another type