



## Pyranometer Mounting Plate, Gen I #14502

### Introduction

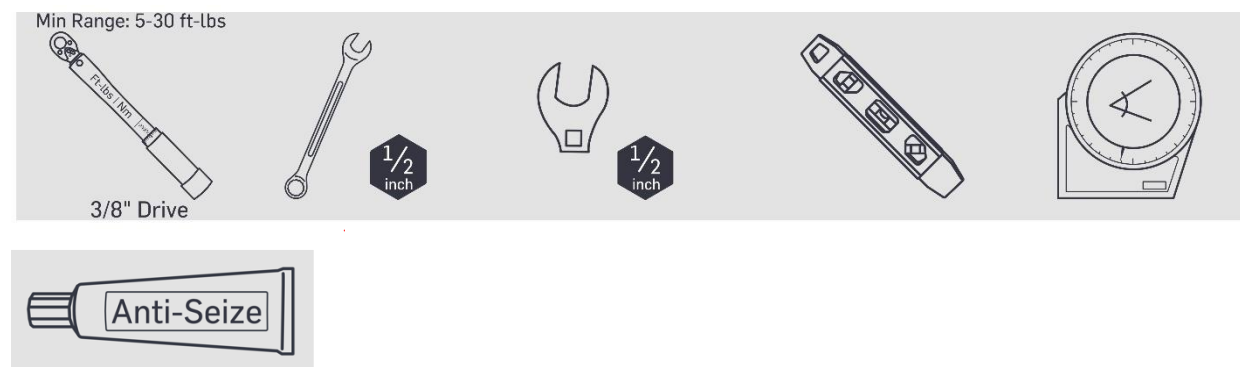
NRG has developed a simple and effective way to mount a variety of pyranometers onto NRG Systems' Solar Pyranometer mounting boom. This rectangular bracket has holes to accommodate the following pyranometers:

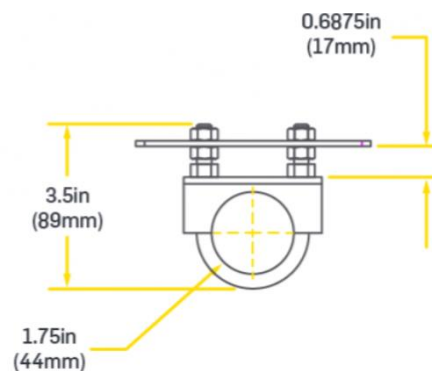
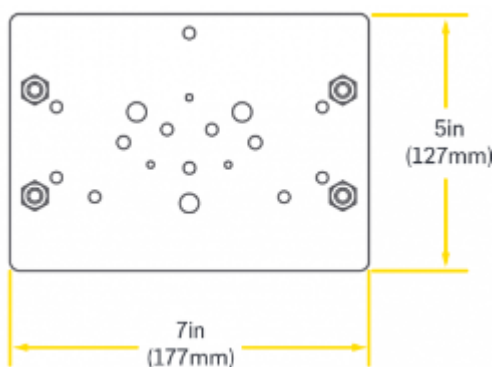
- Delta-T SPN1 Pyranometer
- Li-Cor LI-200R Pyranometer
- Hukseflux LP02, SR11, SR20 Pyranometers
- Kipp & Zonan CMP and SMP Pyranometers
- EKO MS series Pyranometers

### #14502: Parts/BOM

| NRG Part Number | Part Description | Part Specification Notes        | Quantity |
|-----------------|------------------|---------------------------------|----------|
| 6679            | Mounting Plate   | 5" x 7" Anodized Aluminum Plate | 1        |
| 14223           | Clamping U-bolt  | 1.75" ID                        | 2        |
| 14407           | U-Bolt           | 1.75" ID                        | 2        |
| 14356           | Nut              | 1.75", galvanized               | 12       |

### Tools

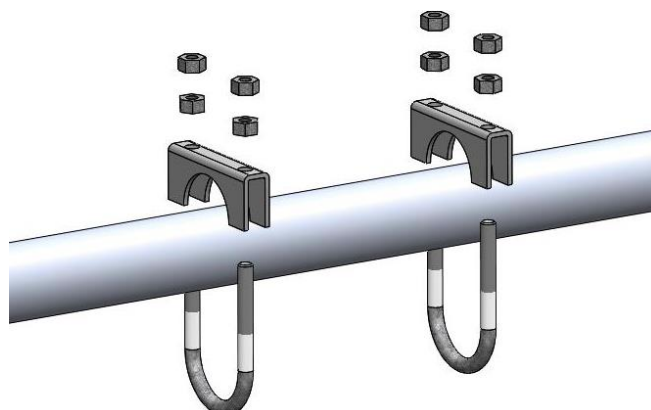




**Apply a small amount of anti-seize to the bolt threads.**

### Procedure

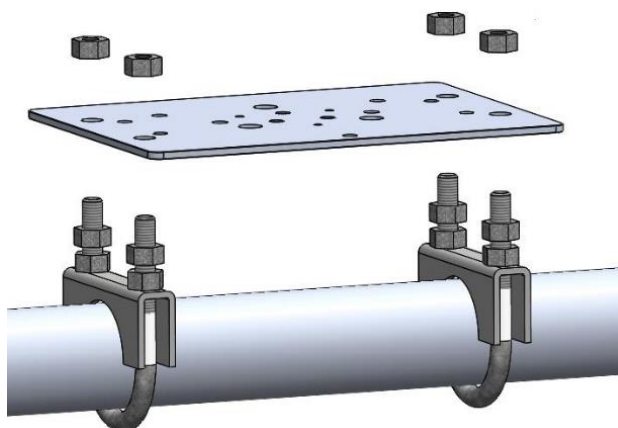
- 1 Assemble the pair of clamping U-bolts around the pipe boom as shown below. Hand-tighten the lower sets of nuts and leave the upper nuts loose.





## Pyranometer Mounting Plate, Gen I #14502

- 2 Line up the mounting holes on each end of the Universal Mounting Plate with a U-bolt. Place the plate onto the U-bolts and loosely thread on a third set of nuts.

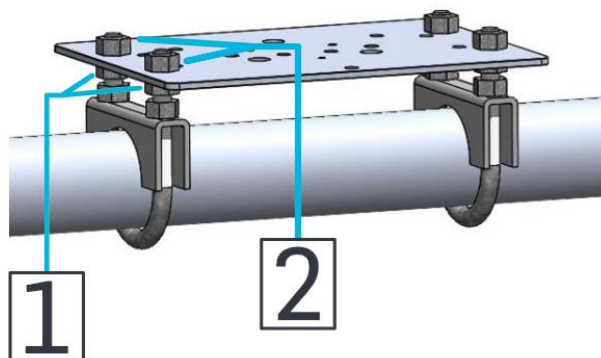
**NOTICE**

*It may make sense to install the sensor to the mounting plate before installing the plate on the U-bolts. In that case, follow the mounting instructions for the sensor, then proceed to Step 2 of these instructions.*



## Pyranometer Mounting Plate, Gen I #14502

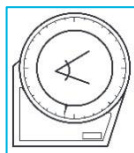
- 3 Rotate the plate to the desired orientation, then secure the plate to the U-bolts.



If installing the mounting plate horizontally, use a bubble level to ensure the plate is flat and tighten the middle (1) & upper (2) sets of nuts of each U-bolt to the plate with a wrench to secure.



If installing the mounting plate at an angle (GPOA) use an angle finder to obtain the desired tilt and tighten the middle (1) & upper (2) sets of nuts to the plate with a wrench to secure.

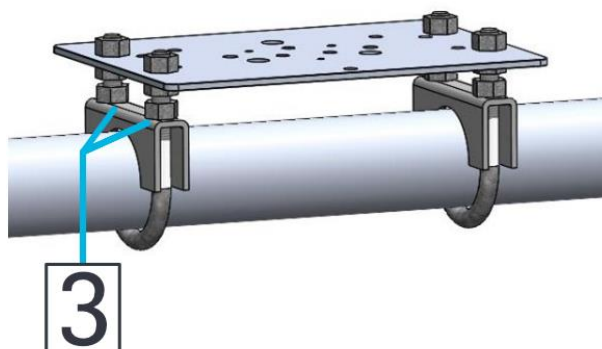


The best practice is to level the plate by moving the middle set of nuts (1), then tighten the upper set (2), then recheck level.



## Pyranometer Mounting Plate, Gen I #14502

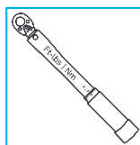
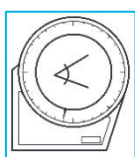
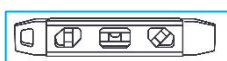
- 4 With the mounting plate set to the desired angle, secure both U-bolts to the pipe boom by tightening the lowest set of nuts (3) against the U-bolt clamps with a wrench.



- 5 Torque all U-bolt nuts to **13 ft-lbs (17.6 Nm)**.



- 6 Check the angle of the plate after securing the assembly to the boom. Make adjustments & retorque all hardware if necessary.



- 7 If not done earlier in the process, attach the sensor to the plate per the manufacturer's instructions. Required tools may vary, and are not listed in these instructions.