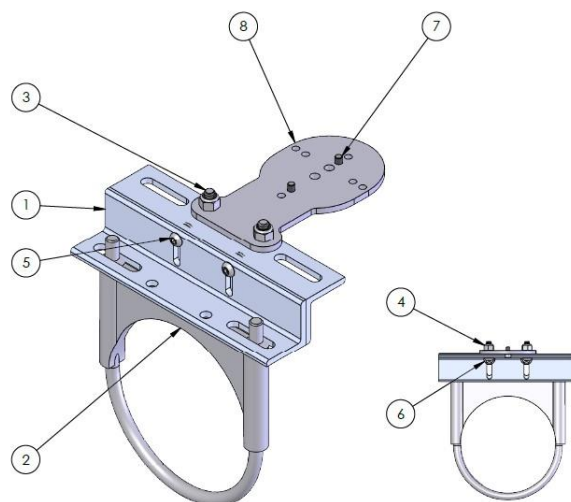




Pyranometer Mount #15845 | Round Torque Tube

Introduction

Kit #15845 was designed to mount a pyranometer to a 5-inch diameter, round torque tube using Universal Mounting Plate #15498 and a U-bolt.



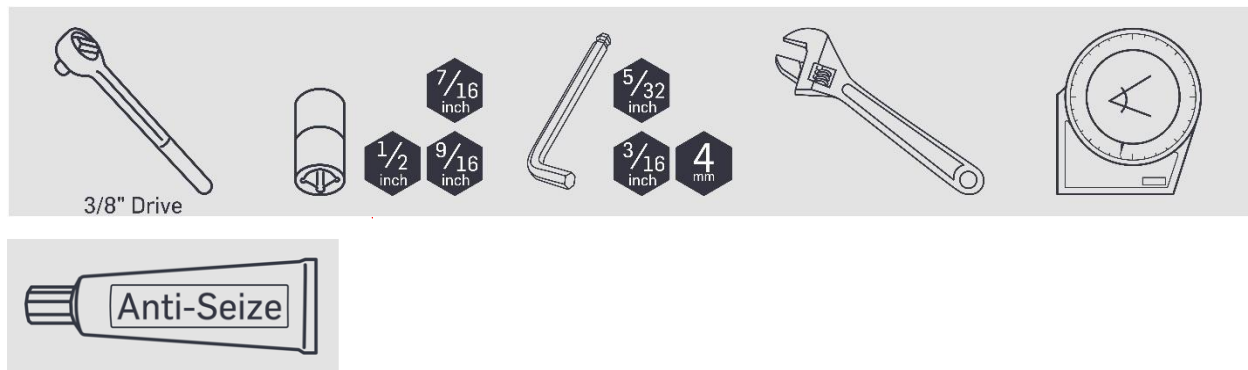
#15845: Parts/BOM

NRG Part Number	Part Description	Part Specification Notes	Qty	Diagram Key
15821	Angle Bracket	Pre-drilled angled aluminum	2	1
15848	Clamping U-Bolt & Nuts	3/8-16 Threaded Zinc-plated 5" ID	1	2
14980	Button Head Screw	5/16-18 thread 0.875" length Stainless	2	3
14979	Nyloc Nut	5/16-18 thread Stainless	2	4
12022	Button Head Screw	1/4-20 thread 0.75" length Stainless	2	5
15869	Serrated Flange Locknut	1/4-20 Threaded Stainless	2	6
14397	Pyranometer Mounting Screws	M5 x 0.8 10mm length Stainless	2	7
15498	Mounting Plate	Aluminum 3/16" thickness	1	8
18249	Nylon washers	Washer, Nylon, .34 ID	2	1
18250	Nylon washers	Washer, Nylon, .375 ID	2	1
18251	Nylon sleeve washer	Washer, Sleeve, Nylon, .3125 ID	2	1

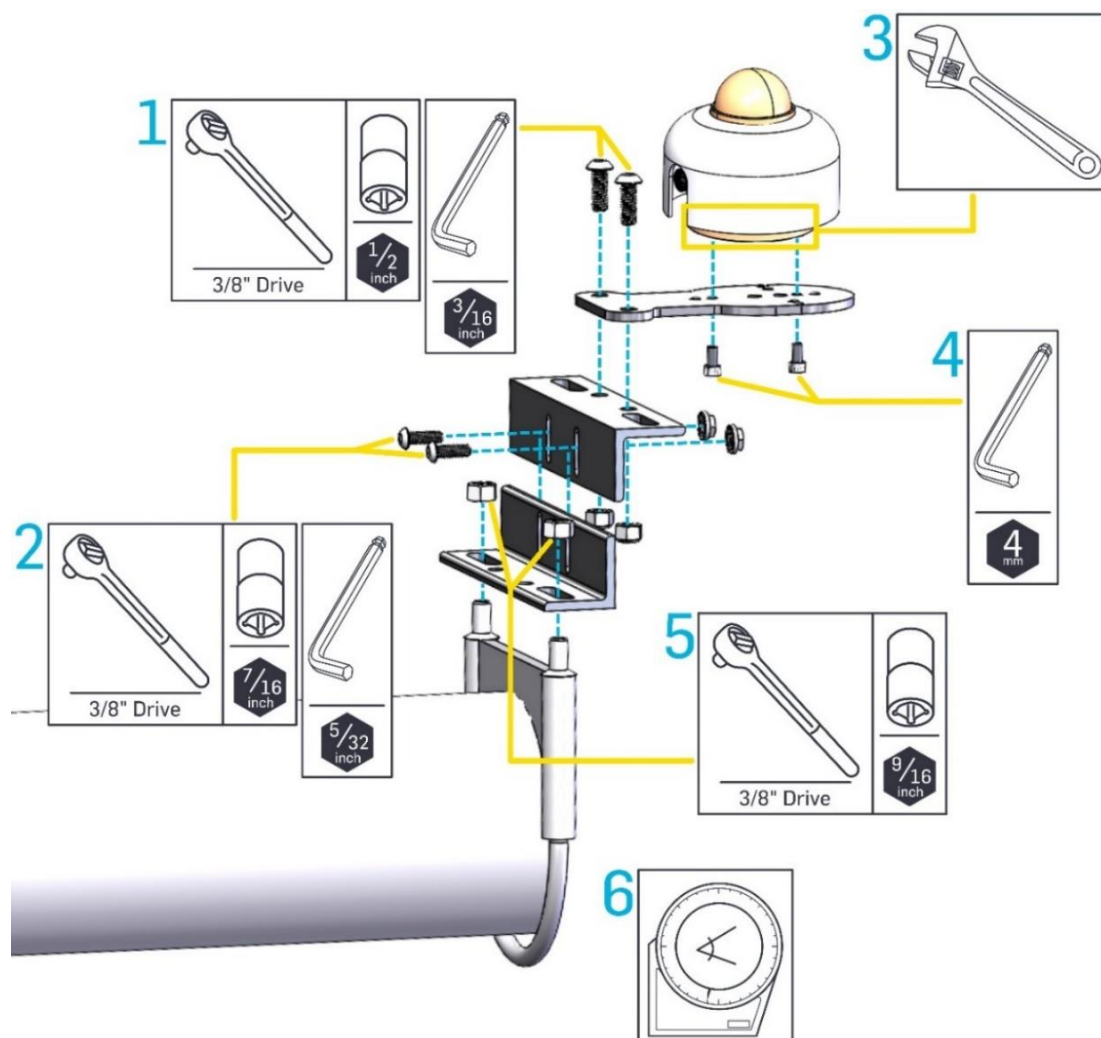


Pyranometer Mount #15845 | Round Torque Tube

Tools



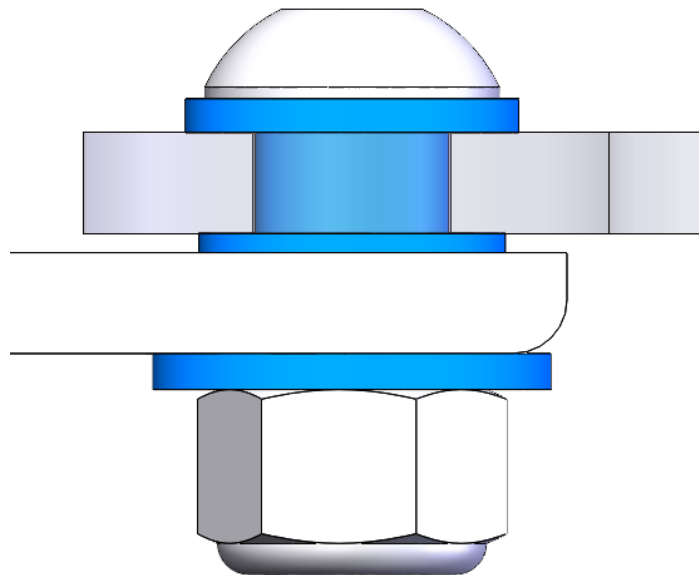
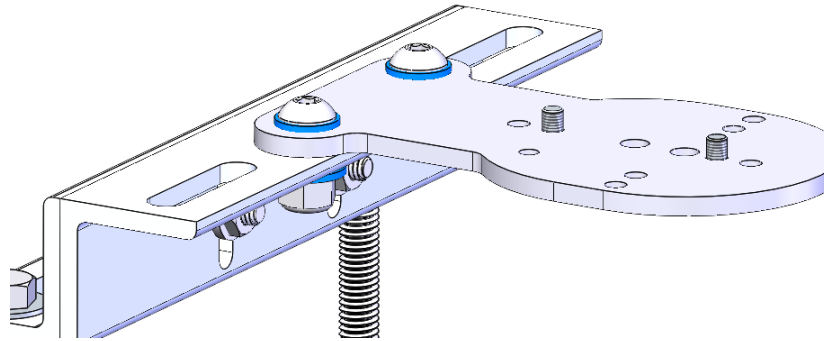
Procedure





Pyranometer Mount #15845 | Round Torque Tube

1. Insert the screws into the sleeve washers #18251 and then through the holes in the Universal Mounting Plate. Add nylon washers #18250 to the ends of the screws, and insert the screws through the holes in the angle bracket #15821. Add nylon washers #18249 to the ends of the screws before adding the nuts as shown below. Nylon washers are represented below in blue.



2. Attach Universal Mounting Plate #15498 to one angle bracket #15821 with the 5/16-18 stainless hardware.
3. Attach both angle brackets together with the 1/4-20 stainless hardware. Leave slightly loose for final adjustment at the end.
4. Remove the pyranometer feet. The pyranometer mounts directly to the bracket.



Pyranometer Mount #15845 | Round Torque Tube

5. Attach the pyranometer to plate #15498 using the M5 stainless hardware.



Install the sensor with the cable exiting towards the nearest pole.

Apply a small amount of anti-seize to the bolt threads.

6. Attach the assembly to the round torque tube using the clamping U-bolt & nuts.

7. Check that the pyranometer is at the correct angle along both axes. Adjust if necessary.



It is critical that the pyranometer be at the same angle/level as the PV panels.

If possible, level the array table and then install the sensor, taking care that the pyranometer mount is at the same level as the PV panels.

Additional Configurations

Pyranometer Mount #15845 can be assembled in several ways for more adjustability. RPOA (not shown) is also possible, as Universal Mounting Bracket #15498 is identical on both faces.



When used for RPOA, the white sun shield should be removed and the sensor cable should exit along the array, typically north or south.

“Z” Configuration (shown in assembly diagram) “T” Configuration (to reduce sensor height)

