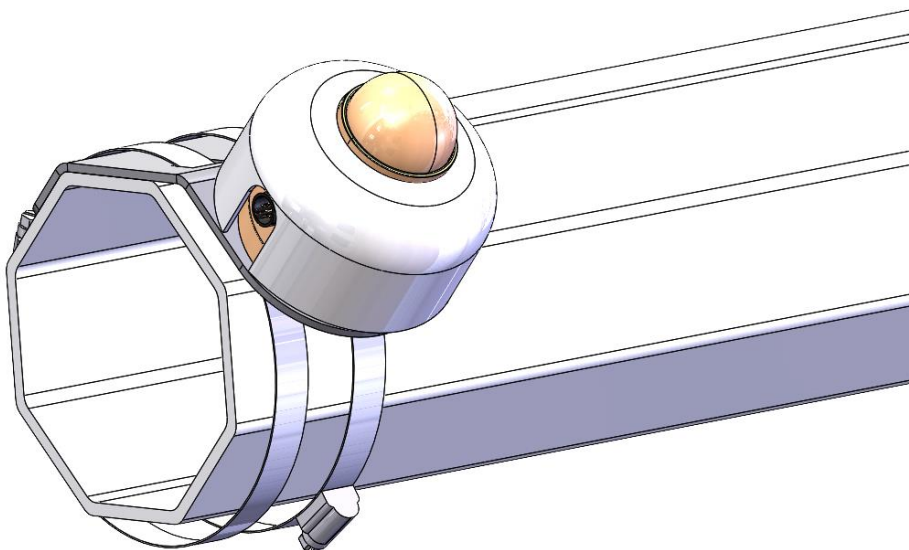




Pyranometer Mount #15403 | Octagonal Torque Tube

Introduction

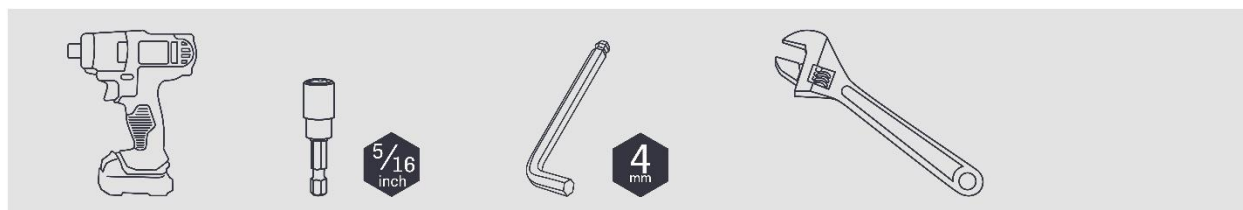
Kit #15403 was designed to mount a pyranometer to an octagonal torque tube using bracket #15134 and a pair of stainless hose clamps.



#15403: Parts/BOM

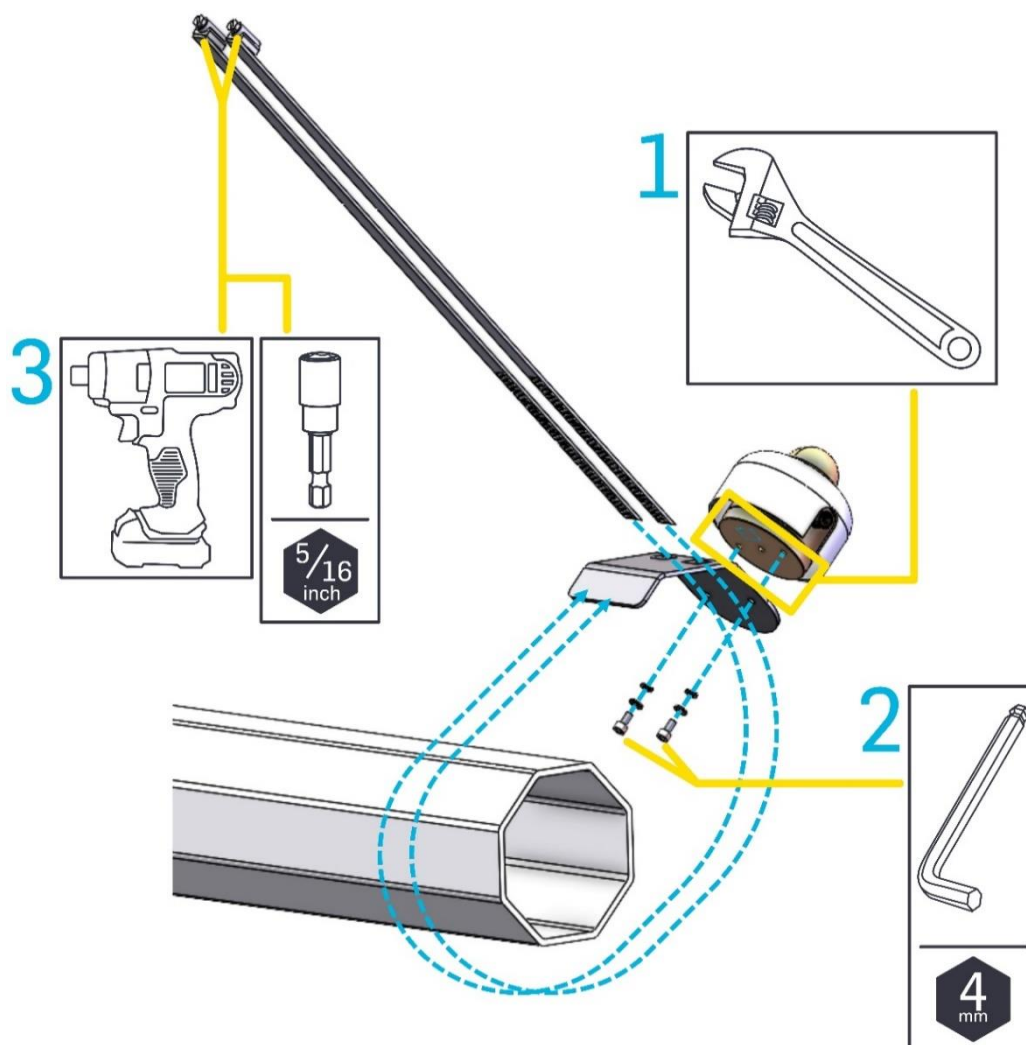
NRG Part Number	Part Description	Part Specification Notes	Qty
10530	Flat Washer	M5 Stainless	2
11283	Lock Washer	M5 Split-lock Stainless	2
14397	Mounting Screw	M5-0.8 threaded 10mm length Stainless	2
15134	Mounting Bracket	1/8" Aluminum plate	1
2703	Hose Clamp	Size #164 2.0-10.75" Stainless	2

Tools





Pyranometer Mount #15403 | Octagonal Torque Tube



Procedure

1. Remove the pyranometer feet. The pyranometer mounts directly to the bracket.
2. Attach the pyranometer to bracket #15134 using the M5 stainless hardware. The flat washers should be against the bracket mounting holes.



Ensure that the pyranometer sensing element is on plane with the PV panels and the sensor cable exits towards the nearest pole.

Apply a small amount of anti-seize to the bolt threads.

3. Align the assembly to the octagonal torque tube. Affix with the stainless hose clamps. *Using a cordless impact driver with 5/16" nutdriver bit is the best practice, but a 5/16" handled nutdriver or flathead screwdriver can be used instead if you're incredibly patient.*