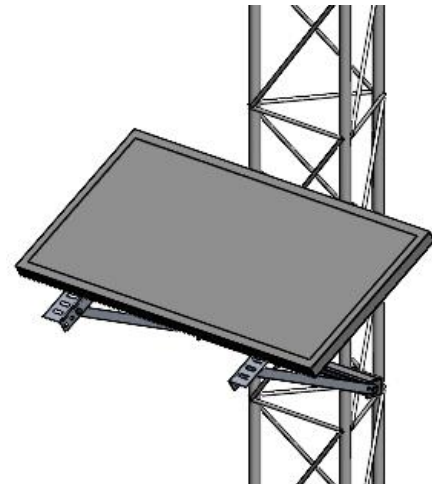




## Introduction

These instructions detail how to install a 100W PV module on a Lasser lattice tower. The combination of a 100W PV module, an auxiliary battery and NRG System's Power Supply provides the site with higher capacity and a regulated 12 VDC power supply for higher-consumption sensors. Note that a battery and power supply are not included in these instructions and must be purchased separately.



## #17029 / Lasser Lattice Tower: Parts/BOM

NRG Part Number	Part Description	Part Specification Notes	Qty
17193	Unistrut Channel	2' Length   Aluminum	2
17192	L-Bracket Mounts	Galvanized steel	4
17011	Panel Mount Bracket	Angled aluminum   1/8" Thickness	2
17222	Panel Mount Support	Aluminum bar stock   3/16" Thickness	2
1518	Mounting Bolts	3/8-16 Threaded   1" Length   Galvanized	14
2814	Washer	3/8" ID   Galvanized	24
4252	Panel Mount Bolts	5/16-18 Threaded   3/4" Length   Galvanized	4
16256	PV Panel	100W Capacity	1
16322	Panel Cables (pair)	12 AWG   8' Length   MC4 Connectors	1
1528	Mounting Band Clamps	Size #24   1.06"-2.0"   Stainless	4

## Tools

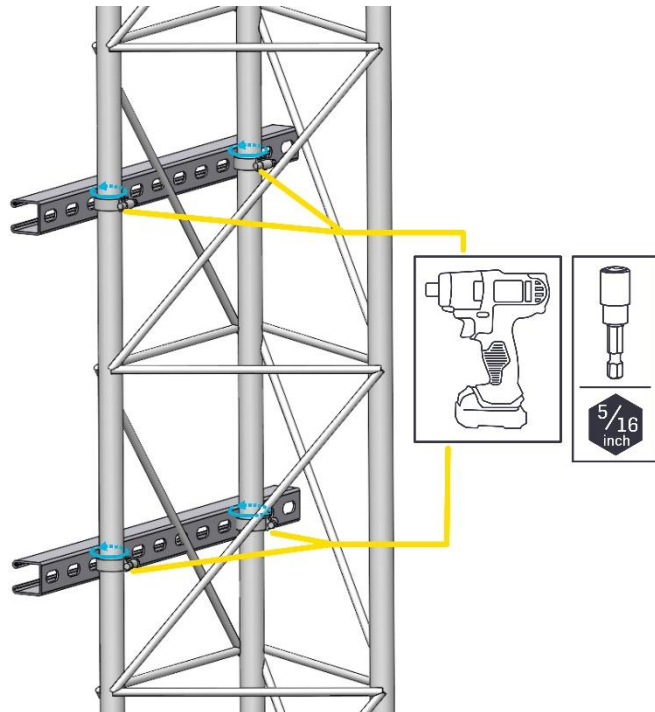




### *Assembly Procedures*

- 1 Mount the sections of unistrut to the tower approximately 16" apart. The method for each kit is noted below.

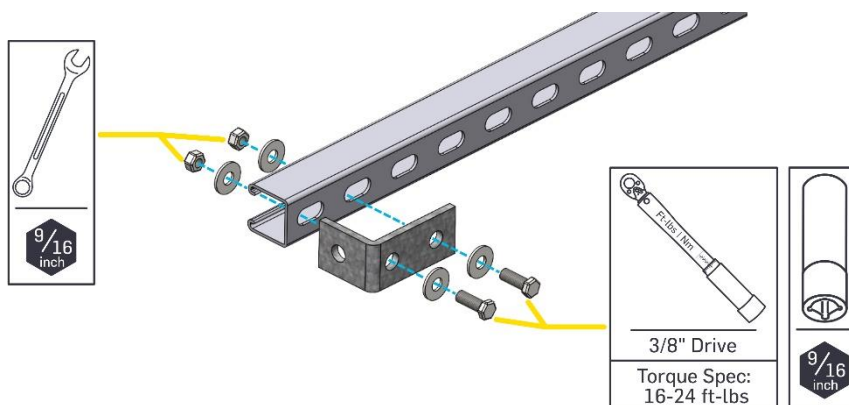
**#17029** uses (4) #24 stainless band clamps to secure the unistrut to the tower.



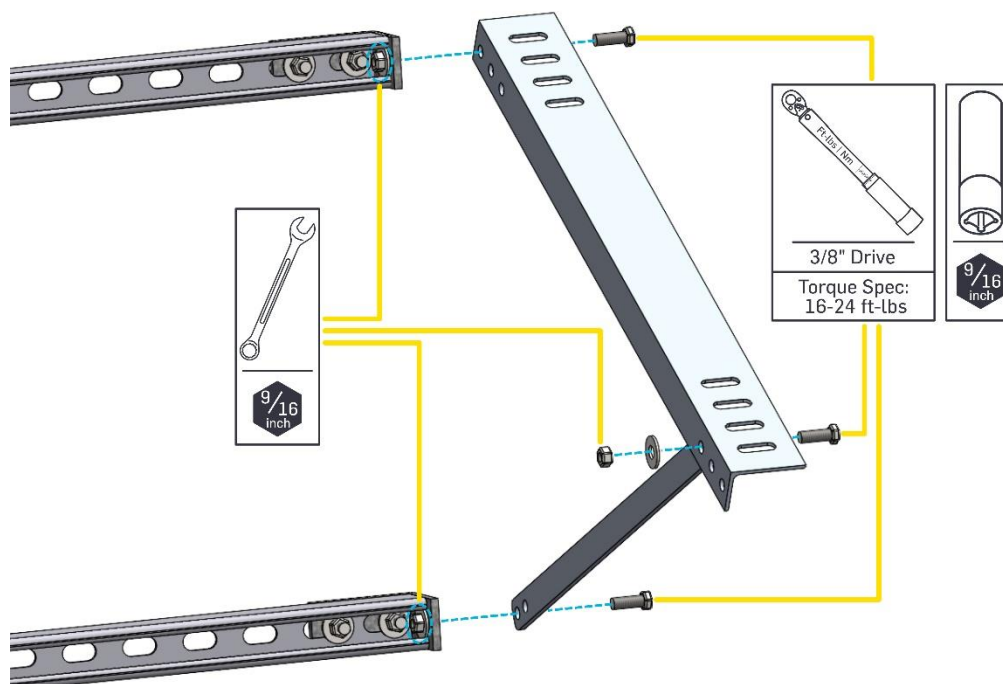


## Lattice 100W PV Bracket

- 2 Attach the L-brackets to the ends of each unistrut section. For clarity purposes only one end is shown, but there are (4) L-brackets total.



- 3 Attach the support struts to the L-brackets. For clarity purposes only one side is shown, but assembly is identical on both sides. There are several holes in the struts for additional angle adjustment fun. Ensure that the same holes are used on each side when assembling.



*Note: #17029 uses 3/16" aluminum bar for the lower struts (part #17222). For additional stability, #17572 uses 1/8" angled aluminum for the lower struts (part #17581). The assembly for each kit remains identical, so only #17029 is shown.*



## Lattice 100W PV Bracket

- 4 Attach the 100W PV panel to the struts.

Insert the carriage bolts into the panel frame from the inside. A washer (part #2814) may be required between the panel frame and angled aluminum struts for additional spacing.

