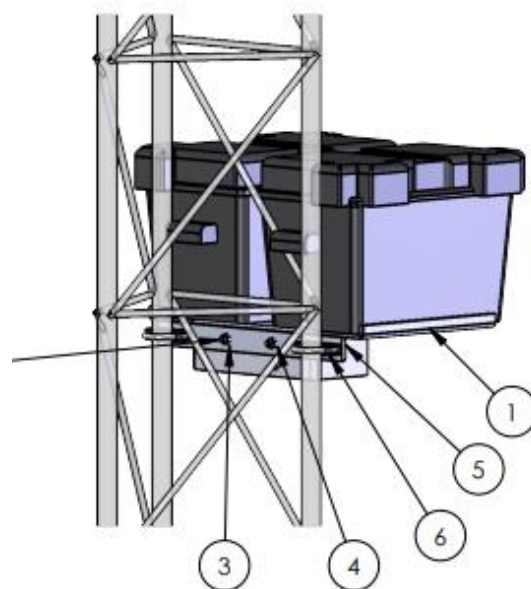
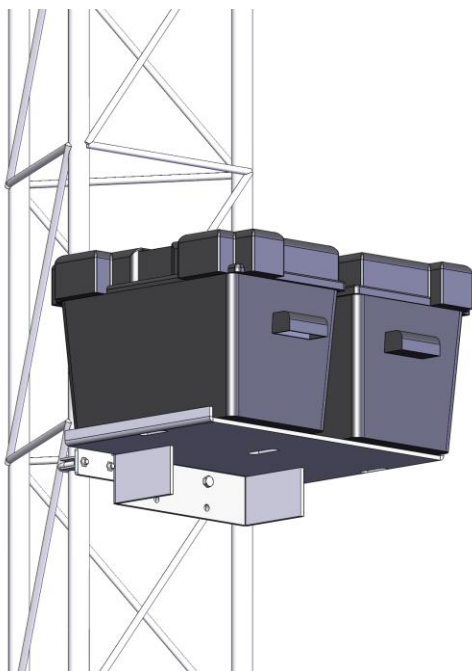




Introduction

These instructions explain how to use the Lattice Tower-Mounted Battery Bracket on a lattice tower.

The platform is made from a single sheet of 1/4" aluminum, CNC-cut & bent into form. It can accept one or two batteries, secured using ratchet straps (not included).

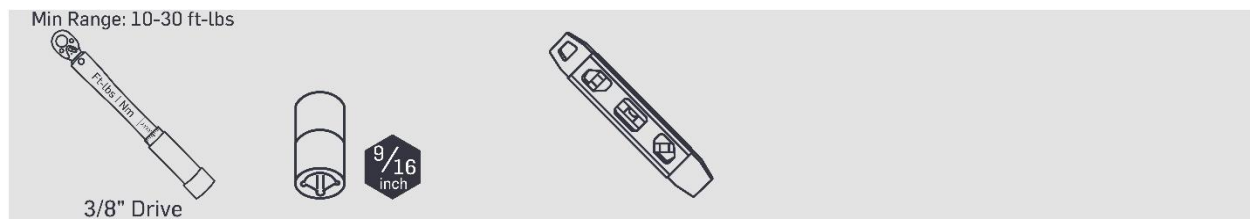


#18287: Parts/BOM

NRG Part Number	Part Description	Part Specification	Quantity	Diagram Key
15379	Bracket	Bracket, Battery Support, Tower Mount	1	1
12042	Bolt	Bolt, .375-16 x 1, 18-8 SS Hex Head	2	2
12095	Washer	Washer, .375 Inch x .875 OD, SS	2	3
16101	Nut	Nut, .375-16, Hex, 18-8 SS	2	4
18288	Adapter Plate	Battery Bracket to Lattice Bracket	1	5
14223	U-bolt	Clamping U-Bolt, 1.75 ID, .3125 Thread	2	6

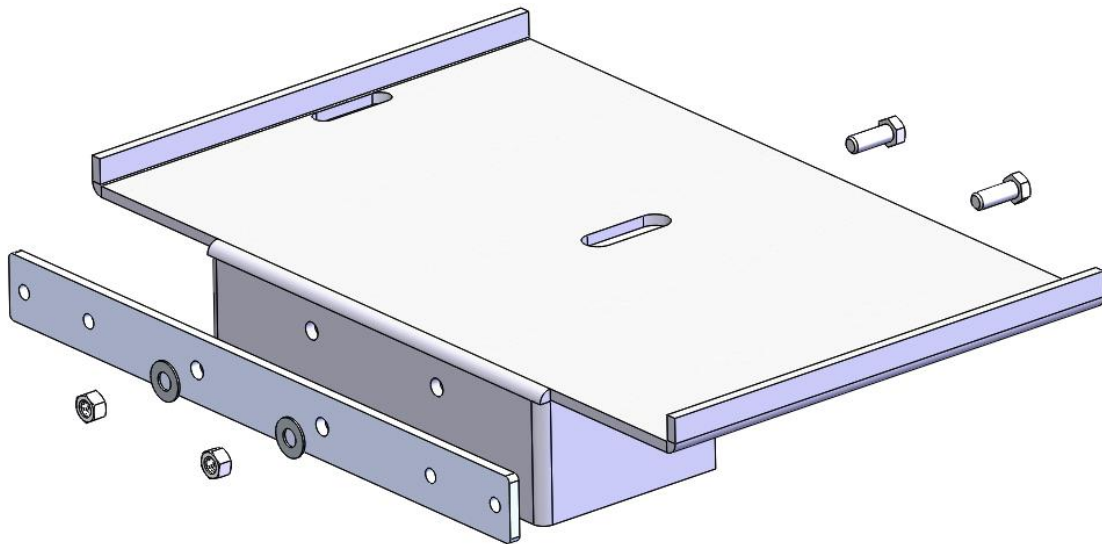


Tools



Assembly & Mounting

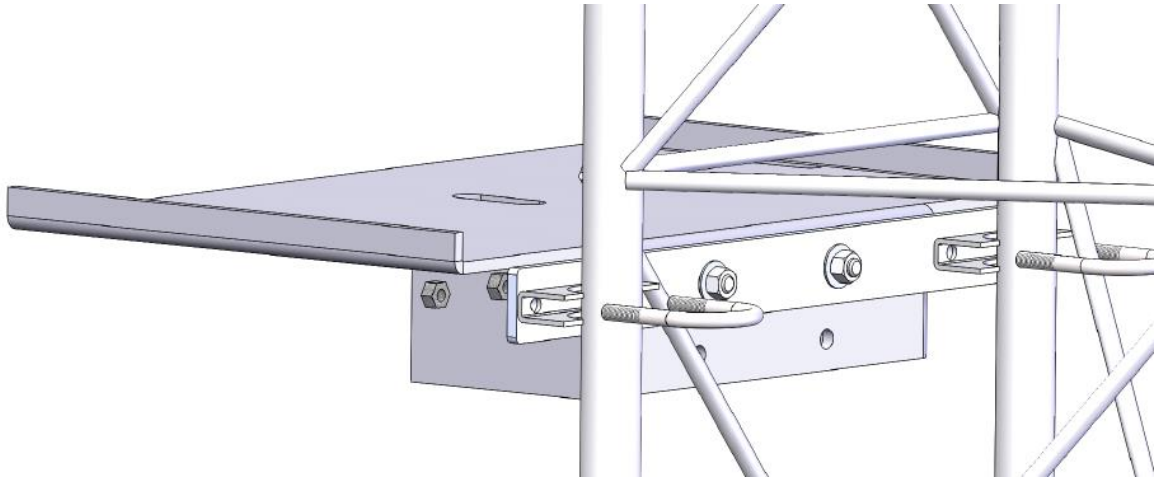
- 1 Bolt the bracket to the adapter plate #18288 using the provided 3/8 (10 mm) hardware as shown below. Tighten using a 9/16 " nut driver.



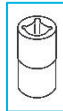


Solar | Lattice Tower-Mounted Battery Bracket #18287

- 2 Mount the bracket to the lattice tower using the #14223 U-bolts. Level the plate, then torque U-bolt nuts to spec.



Torque specification: **25 ft-lbs (33.9 Nm)**



Best practice is to mount the bracket as close to the base as possible, while also remaining above the 100-year flood level (if applicable) and in an orientation that keeps the batteries out of direct sunlight.