

# INSTRUCTIONS

## SymphoniePLUS3CardFormatter.exe usage instructions

This tool will format an NRG SD card (128MB capacity) to the custom format required by the NRG SymphoniePLUS3 data logger.

### Download:

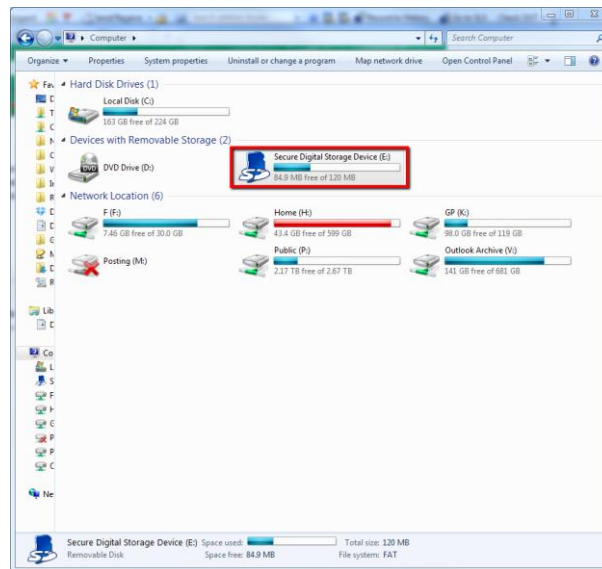
Navigate to [www.nrgapps.com/SDformatter.php](http://www.nrgapps.com/SDformatter.php) and select "SymphoniePLUS3CardFormatter.zip" to download.

### Installation:

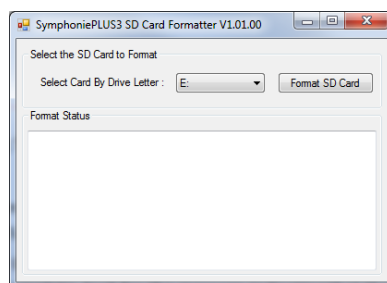
Extract ZIP file to any local folder (for example, C:\NRG\SymDR\).

### Usage:

- 1) Insert NRG SD card into SD card reader.
- 2) Launch Windows Explorer (Start -> Computer) and find the drive letter associated with the card. In the example below the card is in the (E:) drive.



- 3) Navigate to the directory where the zip file was extracted.
- 4) Launch by double clicking SymphoniePLUS3CardFormatter.exe.
- 5) Select the drive letter from the drop-down list in the tool that corresponds to the SD card (per step #2).

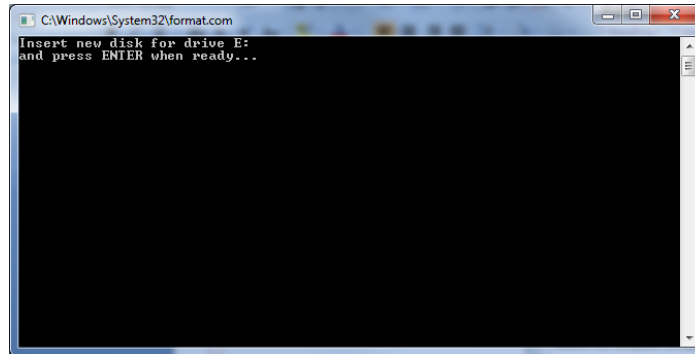


Global leader in wind measurement technology

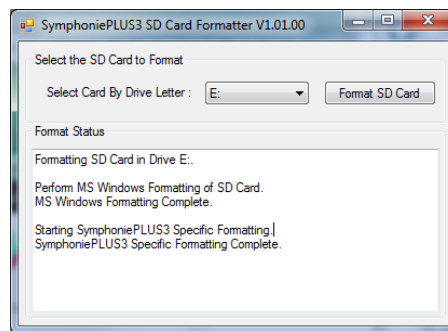
110 Riggs Road • Hinesburg • VT 05461 USA • TEL (802) 482-2255 • FAX (802) 482-2272 • EMAIL: [support@nrgsystems.com](mailto:support@nrgsystems.com)

# INSTRUCTIONS

- 6) Click the button labeled "Format SD Card" to start the process.
- 7) Press the Enter key when prompted by the command line pop-up window that will appear.



- 8) Wait for the program to complete, look for the message indicating that the format completed successfully.



- 9) Remove the SD card from the reader. It is now ready to be used in a SymphoniePLUS3 data logger

**Troubleshooting:** If card formatting fails, try using an SD card reader instead of the computer's built-in SD card slot. If this does not work, or if an external card reader is not available, try running the program on a different computer.

**Windows XP note:** This tool must be run with administrative privileges. Either log on to the machine as an administrator, or right-click the application or select "Run as..." to enter the proper administrator credentials.