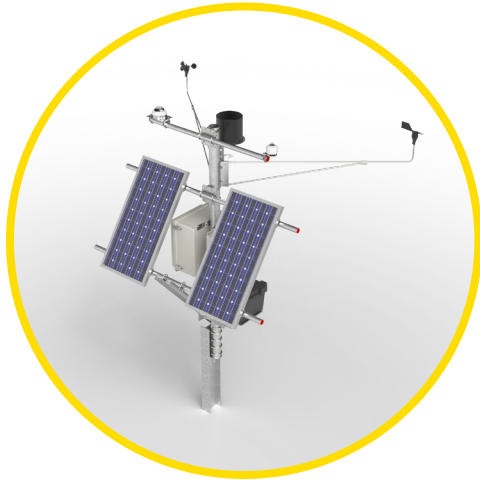


# 2.2 METER SOLAR TOWER

## TECHNICAL PRODUCT SHEET



### Tools Required

- Ratchet/socket set
- Wrench Set
- Cordless Drill/Power driver
- Steel Drill bits/Impact bits
- Tape Measure
- Utility Knife
- Torpedo Level
- Permanent Marker

\*Contact NRG Systems for other associated tools required for specific tower mount configurations

### Overview

Enable your solar resource assessment (SRA) or solar resource monitoring (SRM) projects with reliable, autonomous operation that is quick and easy to deploy. Optimized for pre- and post-construction applications, the 2.2m Solar Tower from NRG Systems is designed to be the ideal mounting platform for a wide variety of assessment and monitoring sensor configurations.

### Specifications

<b>Height</b>	2.2m  Note: Pile mount configuration enables extended tower height (e.g., 3.0 m) based on pile installation.
<b>Material</b>	Galvanized Steel
<b>Tube Diameter</b>	88.9mm (3.5 in)
<b>Foundation</b>	<ul style="list-style-type: none"><li>• Guyed, with Anchors – Item 9015</li><li>• Pad Mount – Item 14475</li></ul>
<b>Options</b>	<ul style="list-style-type: none"><li>• Pile Mount– Item 15037</li></ul>
<b>Shipping Weights</b>	<ul style="list-style-type: none"><li>• Guyed, with Anchors – 19.9 kg (43.8 lbs.)</li><li>• Pad Mount – 31.75 kg (70 lbs.)</li><li>• Pile Mount– 12.4 kg (27 lbs.)</li></ul>
<b>Compatible With</b>	<ul style="list-style-type: none"><li>• NRG Tubular Booms *</li><li>• NRG Pyranometer Booms*</li><li>• Tower battery bracket – Item 15736</li><li>• SymphoniePRO Shelter Box Assembly (Items 14873, 14887)</li></ul> <p>*Contact NRG Systems for more details</p>

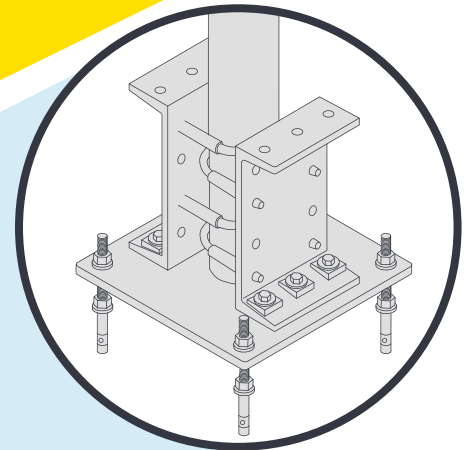
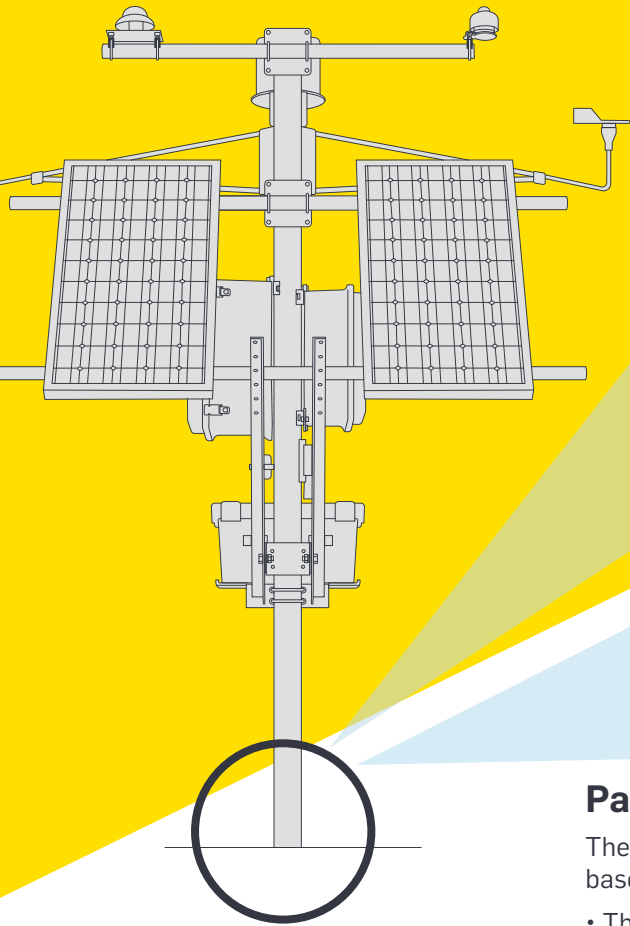
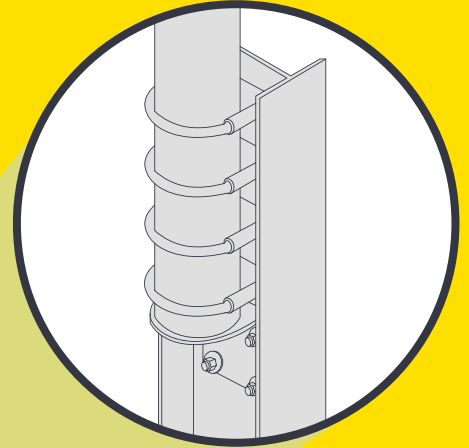


**NRG**Systems®

## Pile Mount

The Pile Mount 2.2 meter tower uses four stainless steel U-bolts and an L-bracket to secure the tower tube to an appropriately spec'ed H, I or C style pile.

- The face width of the pile should be a minimum of 5.4" (13.72 cm)
- The pile must be driven deep enough to support the MET Station's total weight. Loading information will be shared to determine the proper pile specifications.
- The pile is typically installed 24" (60 cm) above grade and will need to be drilled with 12 x 7/16" (11 mm) holes to allow the U-bolts and L-bracket to be secured in place.
- If needed, the tower can be made taller by leaving more of the pile exposed above grade to increase the height of the tower.
- See the Solar Tower Installation | [Pile Mount](#) document for details.



## Pad Mount

The Pad Mount tower uses four concrete anchor bolts to secure the tower baseplate to a concrete foundation.

- The foundation should be a minimum of 12" x 12" (30.5 cm x 30.5 cm) square. The final dimensions (length x width x depth) should be determined by an engineer familiar with the local site conditions and regulations. Loading information will be shared to determine the proper pile specifications.
- When the concrete pad has cured, 4 x 0.5" (12.7 mm) holes should be drilled 10" (25.4 cm) from each other, approximately 3" (7.62 cm) deep.
- See the Solar Tower Installation | [Pad Mount](#) document for details.

### For more information:

NRG Technical Support

+1 802.482.2255

support@nrgsystems.com

nrgsystems.com

ISO 9001: 2015 Certified

ISO 14001: 2015 Self-Certified