



Enabling 5 V Constant Excitation for Fielded 200M Wind Direction Vanes

INTRODUCTION

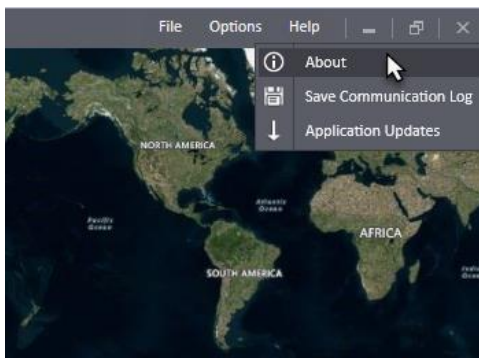
The following document explains how to change the 200M Wind Vane excitation mode on a SymphoniePRO Data Logger from **5 V Pulsed On** to **5 V Constant On**. Before making the change an Advanced Mode needs to be enabled in order to modify the Excitation settings for the sensor.

INSTRUCTIONS

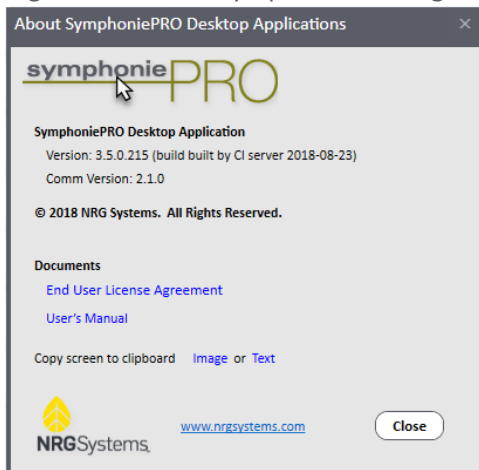
Note: the '*nrgsensor*' Advanced Mode will need to be activated every time the application is opened (i.e., this setting is not persistent across application sessions).

Before proceeding, make sure the installed version of SymphoniePRO Desktop Application is 3.5 or higher. This can be checked by following the first two steps below. If the software is out-of-date, click on the **Help** dropdown menu and choose **Application Updates**.

1. Click on the **Help** dropdown menu in the upper right hand corner of the software window and choose **About**:



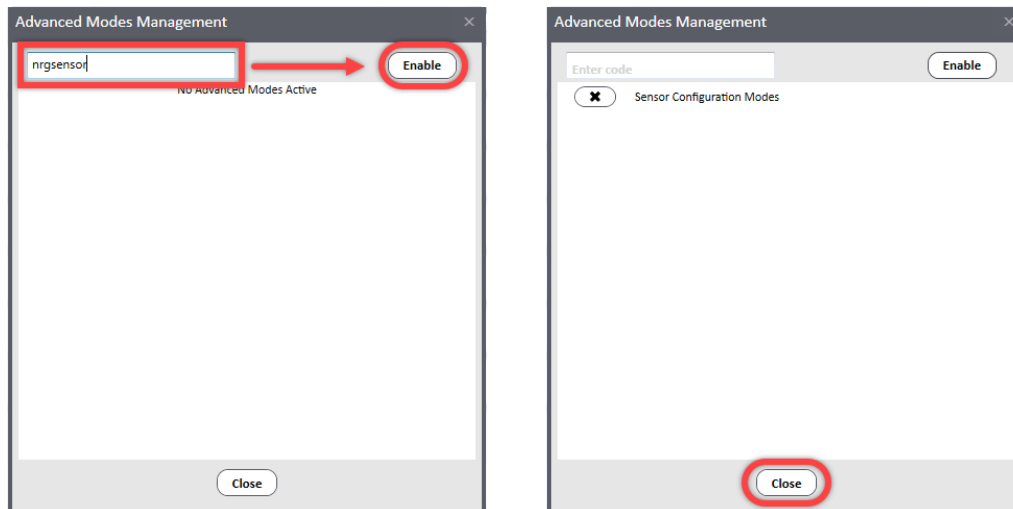
2. Right-click on the SymphoniePRO logo to open the Advanced Modes window:





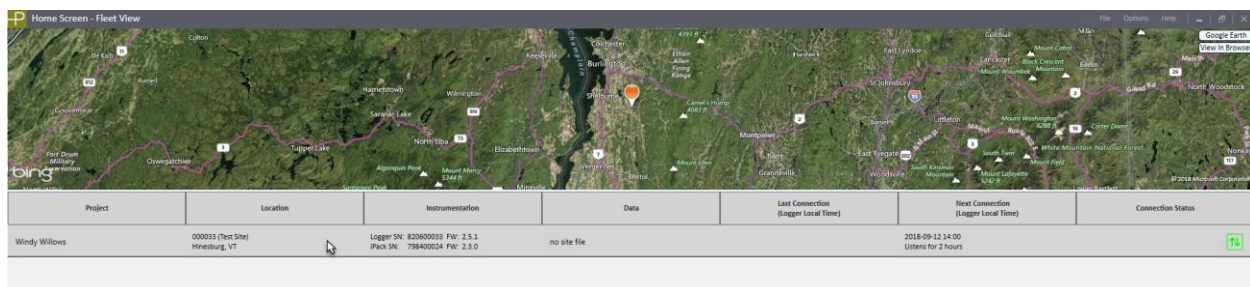
Enabling 5 V Constant Excitation for Fielded 200M Wind Direction Vanes

3. Type 'nrgsensor' in the text box and press **Enable**. Once the Mode is active, close the Advanced Modes window:

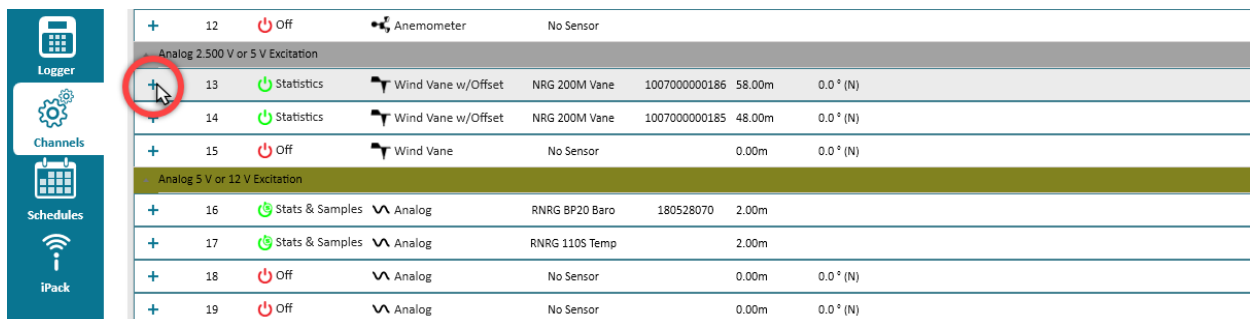


4. Connect to the Logger/iPack via USB or MetLink Connection.

5. Double click on the site that needs to be modified:



6. Navigate to the Channels tab and expand the Wind Vane channels that have 200M sensors on them:





Enabling 5 V Constant Excitation for Fielded 200M Wind Direction Vanes

7. Change the Excitation Mode from Pulsed On to Constant On:

Panel 13: Wind Vane w/Offset, NRG 200M Vane, 1007000000186, 58.00m, 0.0° (N)

Excitation Mode: Pulsed On (highlighted)

Excitation Voltage: Off

Excitation Mode Options: Pulsed On, Constant On (being clicked)

Other Settings: Voltage: Off, Dead Band Compensation: Pulsed On, North East: 0°, North West: 0°, Scale Factor: 147.911 Degrees per V, Offset: -1.4602 Degrees, Analog Mode: Uni-Polar Common Ground

Panel 13: Wind Vane w/Offset, NRG 200M Vane, 1007000000186, 58.00m, 0.0° (N)

Excitation Mode: Constant On (highlighted)

Excitation Voltage: 5 V

Other Settings: Dead Band Compensation: 0°, North East: 0°, North West: 0°, Scale Factor: 147.911 Degrees per V, Offset: -1.4602 Degrees, Analog Mode: Uni-Polar Common Ground

8. Repeat this process with all of the 200M Wind Vanes on the logger and then press **Save All**:

Panel 14: Wind Vane w/Offset, NRG 200M Vane, 1007000000185, 48.00m, 0.0° (N)

Excitation Mode: Constant On

Excitation Voltage: 5 V

Other Settings: Dead Band Compensation: 0°, North East: 0°, North West: 0°, Scale Factor: 147.911 Degrees per V, Offset: -1.4602 Degrees, Analog Mode: Uni-Polar Common Ground

Buttons: Save All (highlighted), Discard All



Enabling 5 V Constant Excitation for Fielded 200M Wind Direction Vanes

9. If connected via MetLink disconnect from the logger by pressing the green arrows and choose **Disconnect**:

